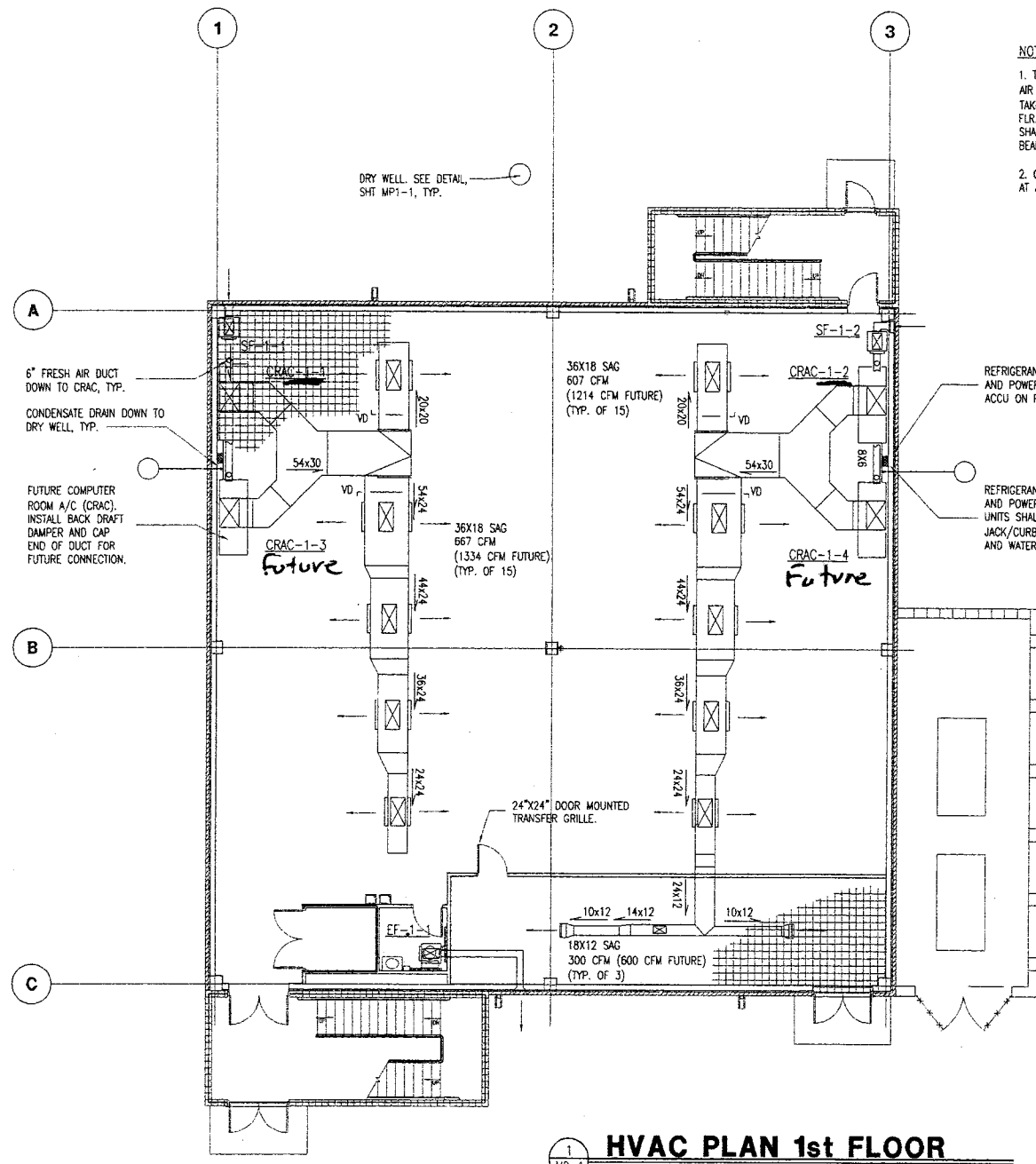


NOTE:

1. TOP OF DUCTWORK SHALL RUN FLAT WITH AIR GRILLES SHALL BE INSTALLED W/ CUTOUT TAKE-OFFS. MINIMUM CLEARANCE OF 11'-0" FLR. AND BOTTOM OF MAIN AND BRANCH DL SHALL BE MAINTAINED. DUCT FLANGES SHALL BEAMS.

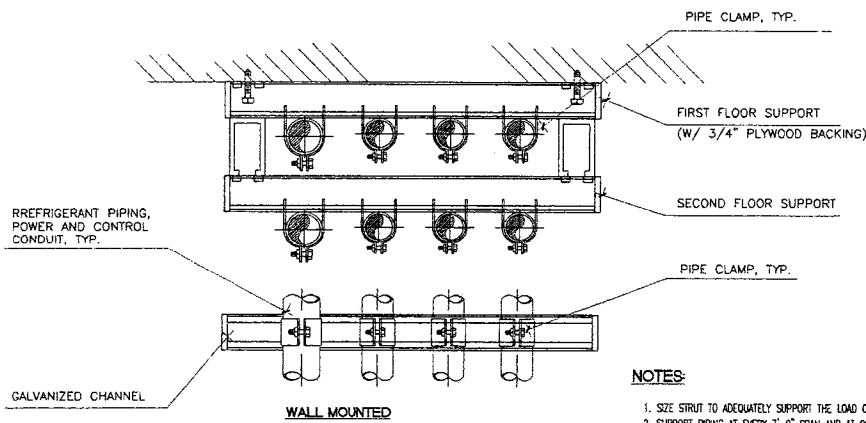
2. CONTRACTOR SHALL PROVIDE APPROVED F... AT ALL FLOOR PENETRATIONS.



HVAC PLAN 1st FLOOR

1
M2-1

1/8" = 1'-0"



NOTES:

1. SIZE STRUT TO ADEQUATELY SUPPORT THE LOAD OF REFRIGERANT PIPING, POWER AND CONTROL CONDUIT.
2. SUPPORT PIPING AT EVERY 7'-0" SPAN AND AT 90° BENDS AS REQUIRED BY CODE.
3. SIZE PIPE CLAMP TO PIPE SIZE AND INSULATION THICKNESS.
4. USE INSULATION SHIELDS FOR COLD LINES AND PROTECTION SADDLES FOR HOT LINES.
5. STRUT & CLAMPS SHALL BE AS MANUFACTURED BY B-LINE, OR APPROVED EQUAL.

PIPE SUPPORT DETAIL

3
M2-1

NTS



STOTTLER STAGG + ASSOCIATES
 ARCHITECTS ENGINEERS PLANNERS INC
 8800 N. Atlantic Avenue, Cape Canaveral, FL 32909
 Phone (321) 781-0100 Fax (321) 781-7000
 www.stottlerstagg.com

Consultant

Revisions/Comments

Cadd File Information

| | |
|------------|----------------|
| Cadd File: | 115M2-1.DWG |
| Scale: | 1/8" = 1'-0" |
| XRef: | SSA24X36-A.DWG |
| XRef: | 115GR-1.DWG |
| XRef: | 115PR2-1.DWG |
| XRef: | 115PR2-2.DWG |
| Font: | ARCHDUK |
| Font: | AU2 |

Drawing Information

| | |
|--------------|-----------|
| Drawn by: | JCC |
| Checked by: | JCC |
| Approved by: | JCC |
| Date: | 2/13/2001 |

SSA Job Number

2000-115

Project Name and Location:

FIBER OPTICS TERMINAL FACILITY DAYTONA BEACH

Sheet Title

HVAC PLANS

Seal

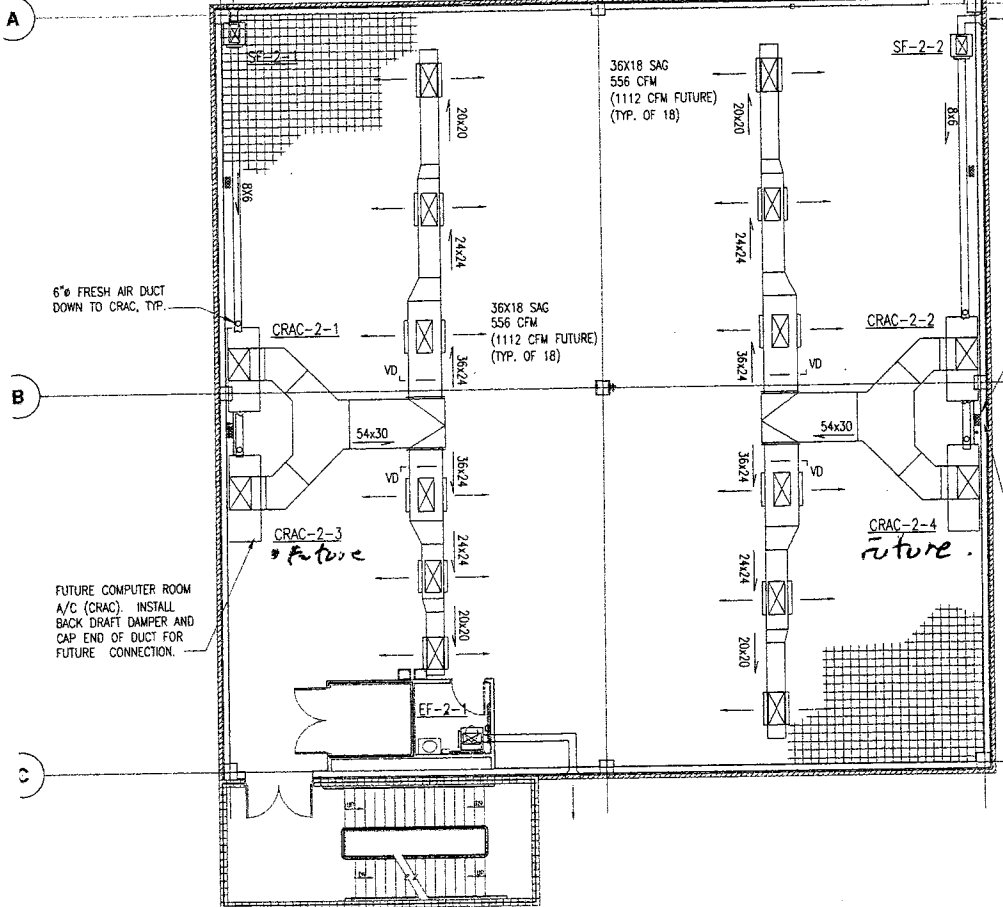
Drawing Number

M2-1

Drawing: Of:

BOTTOM OF BEAM AND NO BOOTS OR JOINTS 11'-6" BETWEEN RESPECTIVELY, OCCUR BETWEEN

SLEEVES/SEALS

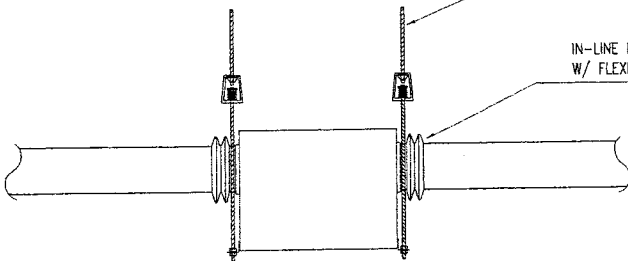


HVAC PLAN 2nd FLOOR

1/8" = 1'-0"

1/4" STEEL, THREADED ROD W/ BEAM CLAMP AND HEX NUTS.

IN-LINE EXHAUST FAN W/ FLEXIBLE CONNECTION



INLINE EXHAUST FAN DETAIL

NTS